

Elitech[®]

Elite of technology

RCW-360 2G/4G/WIFI USER MANUAL

Elitech cloud login: www.i-elitech.com.

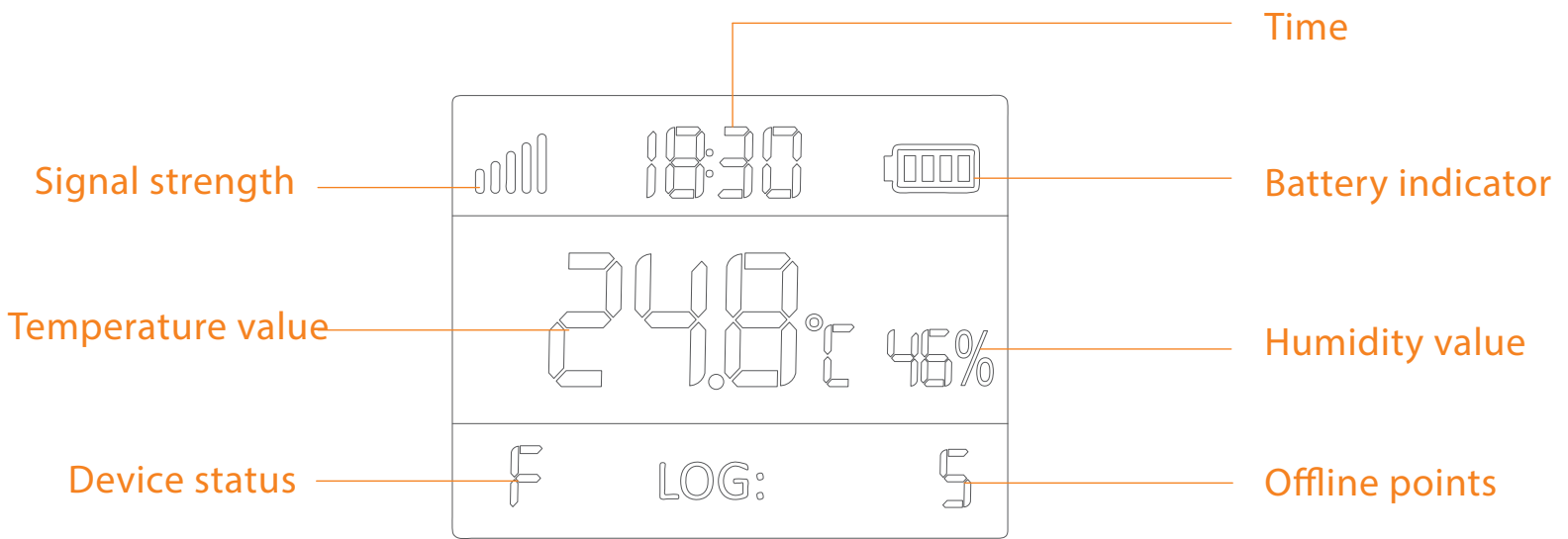
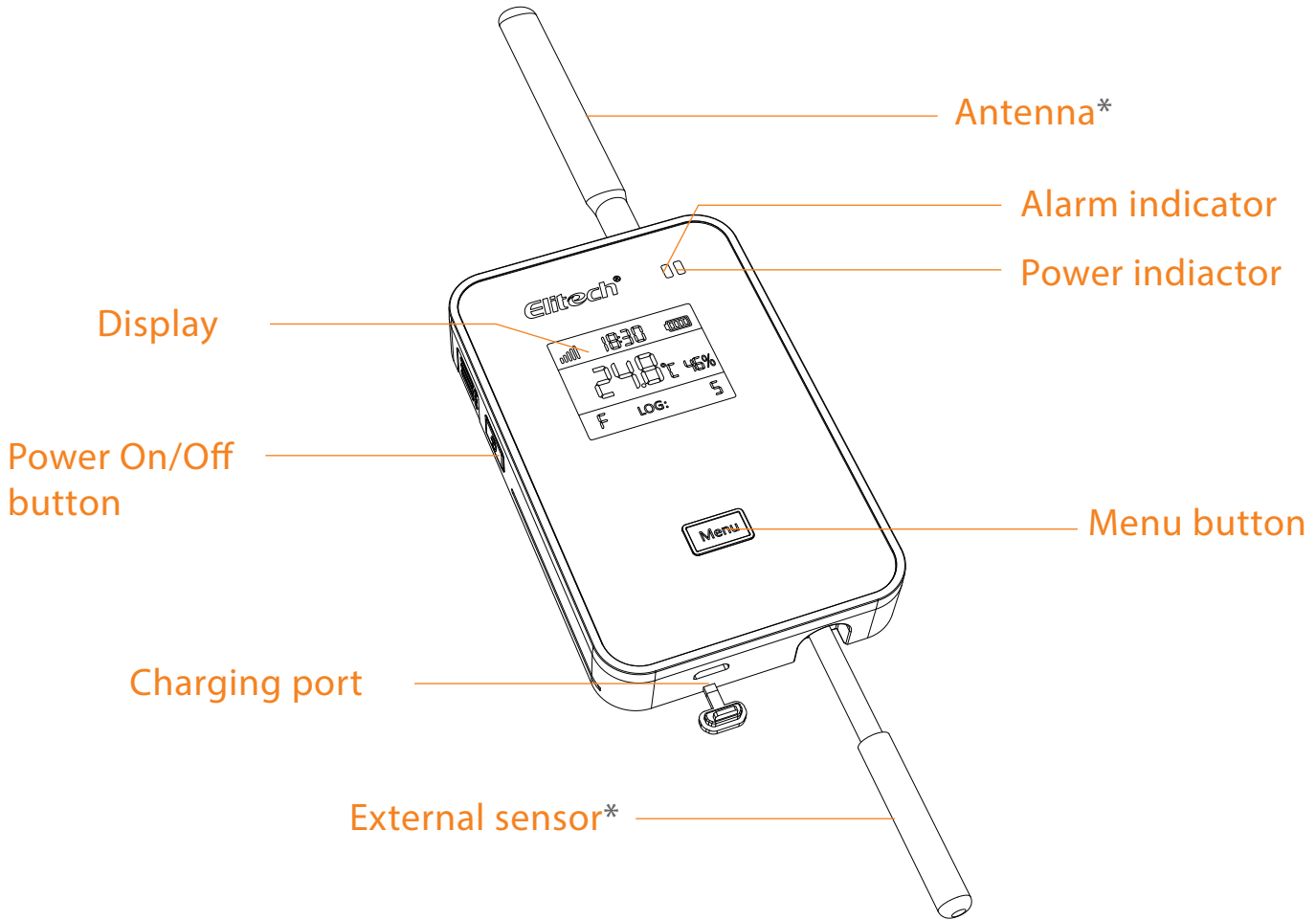


iOS APP
Scan the QR code or
download on the App Store



Android APP
Scan the QR code or
download on the Google Play

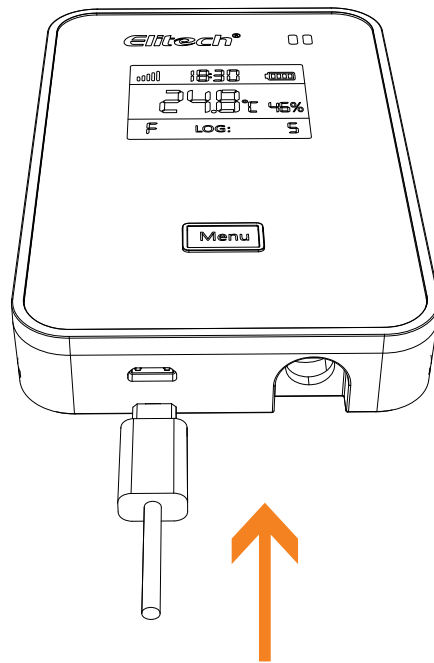
Appearance



*The External sensor and Atenna on the product picture shown above is for illustration purpose only and may vary from the actual product.

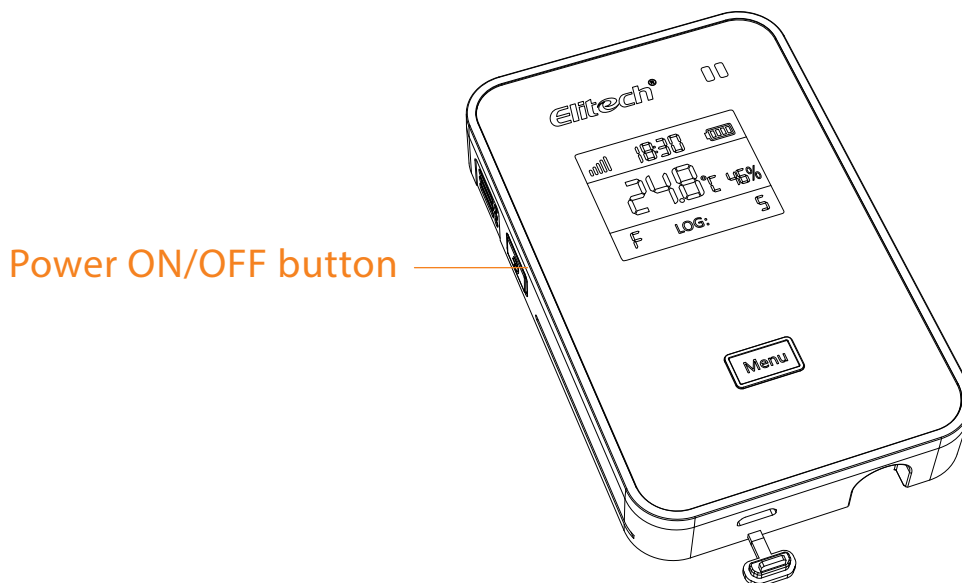
2 Charging

Use a cable to connect USB port to the power adapter and plug the adapter to a power supply source. During charging, the device's Power indicator light will turn to green. When the device is fully charged, the green Power indicator light will turn OFF.



3 ON/OFF

- 1) ON: Press and hold the Power ON/OFF button for 3 seconds until you hear a beep sound. The screen will light on and the device is turned ON successfully
- 2) OFF: Press and hold the Power ON/OFF button for 3 seconds until you hear a beep sound. The screen will closed and the device is turned OFF successfully



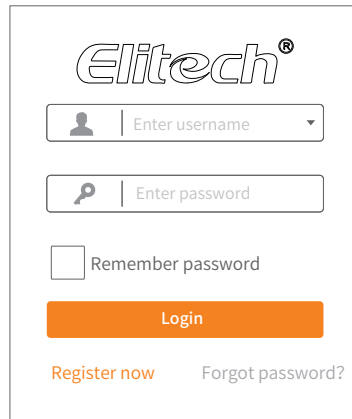
4 Elitech App

1. Download APP:

Please scan the QR code on the front of the manual or search 'Elitech' on the App store or Google Play to download the app.

2. Login

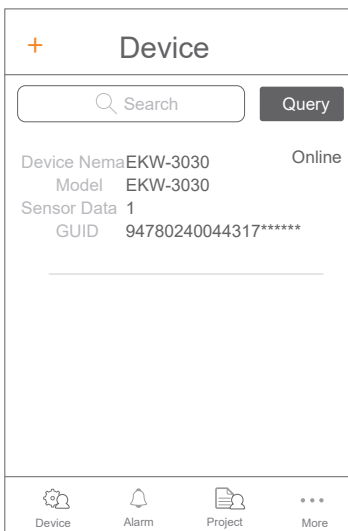
Register and login to your account.



The login screen features the Elitech logo at the top. Below it are two input fields: 'Enter username' with a user icon and 'Enter password' with a key icon. A 'Remember password' checkbox is located below the password field. An orange 'Login' button is positioned below the checkbox. At the bottom, there are two links: 'Register now' and 'Forgot password?'.

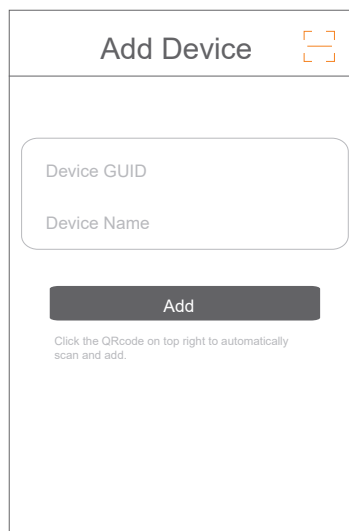
6 Add device

Device: SIM Card Version



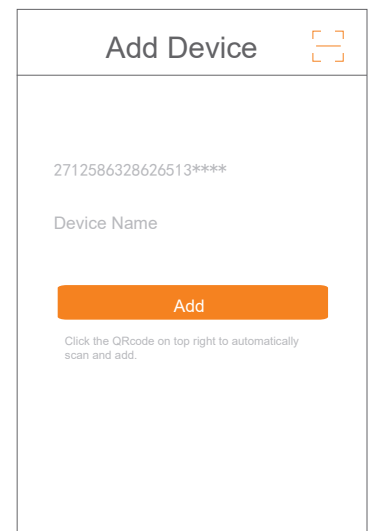
The 'Device' screen shows a list of devices. A search bar and a 'Query' button are at the top. The first device entry is 'EKW-3030' with 'Online' status. Below the device name, it lists 'Model EKW-3030', 'Sensor Data 1', and 'GUID 94780240044317*****'. A bottom navigation bar contains icons for 'Device', 'Alarm', 'Project', and 'More'.

① Click '+'.



The 'Add Device' screen has a QR code scanner icon in the top right. It contains two input fields: 'Device GUID' and 'Device Name'. Below these is a dark grey 'Add' button. A note at the bottom reads: 'Click the QRcode on top right to automatically scan and add.'


② Click and scan the QR code on the back of the device.

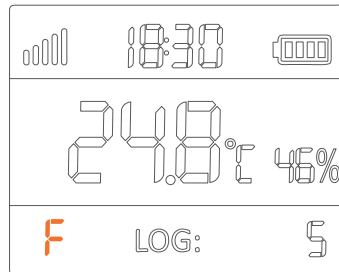


This 'Add Device' screen shows the device GUID '2712586328626513****' and the 'Device Name' field. It features an orange 'Add' button and the same note: 'Click the QRcode on top right to automatically scan and add.'

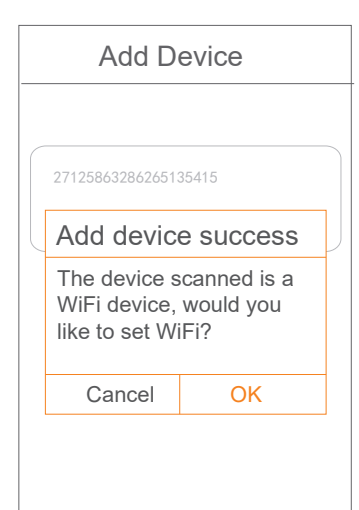
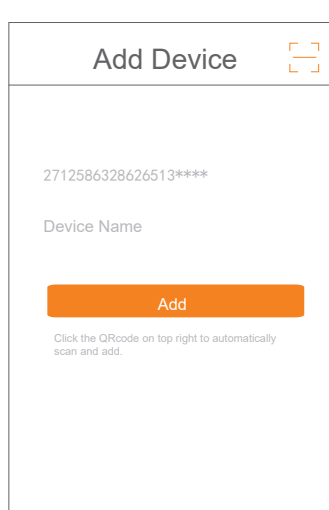
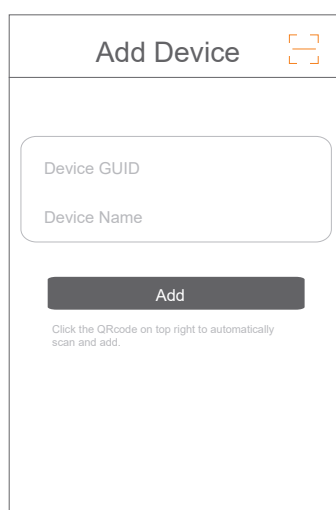
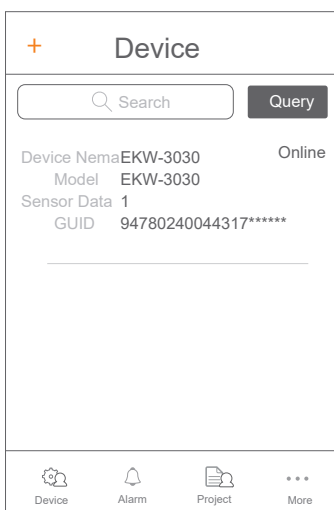
③ Click 'Add' and the device will be added.

Device: WiFi version

1. Connect your mobile phones with your preferred WiFi/WLAN network.
2. Open the Elitech App.
3. Press and the hold menu button  for 10 seconds until segment screen displays 'F', which means the device is now ready for wifi configurations.



4. Please follow the steps 1 to 8 below for WiFi configurations:

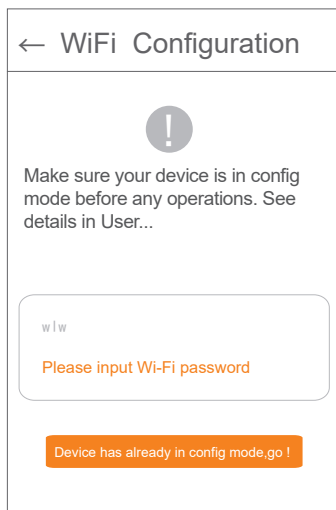


① Click '+'.

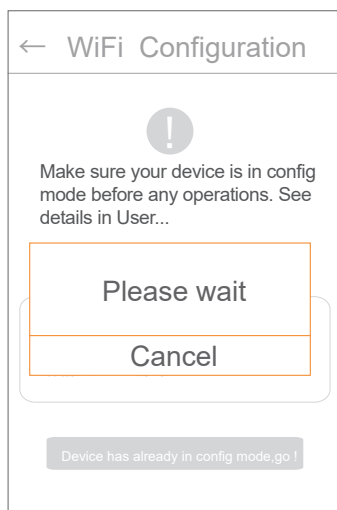
② Click and scan the QR code on the back of the device.

③ Click 'Add' and the device will be added.

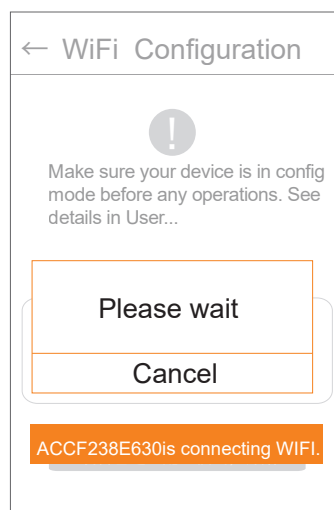
④ Click 'OK'.



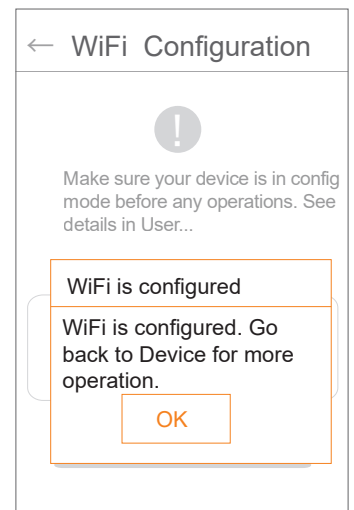
⑤ Enter Wi-Fi password.



⑥ Wait for Wi-Fi settings.



⑦ Wait for Wi-Fi settings.



⑧ Click 'OK' to finish all WiFi configuration procedures.

5. If the configuration fails or you want to change to other WiFi network, please repeat steps 3. and 4. to re-configure.

6. When 'F' icon disappeared, WiFi is configured successfully.

7 Elitech Cloud

1. Login Cloud Portal

- Please type in this URL: www.i-elitech.com into any web browser to access the Elitech Cloud portal.
- Register and log into your account for more operations and functions.
- Click 'Help' from the Cloud Portal page to obtain more Cloud and App operation instructions.

2. Top up SIM card credit

If your device is SIM version, please top up your SIM card directly on our Elitech APP.

8 Technical specification

Power adapter	5V/1A
Temperature measuring range	-20℃ ~ + 70℃ (internal), -40℃ ~ +80℃ (external)
Temperature accuracy	±0.5℃
Temperature resolution	0.1℃
Humidity measuring range	0~100%RH
Humidity accuracy	±5%RH
Humidity resolution	1%RH
Memory capacity	32,000 points
Logging interval	5 minutes to 24 hours. Default interval is 30 minutes (@25℃)
Battery	Rechargeable lithium battery
Duration	Approximately 3 months at 1 hour upload
Protection level	Device with internal sensor: IP65; Device with external sensor: IP64
Sensor type	Internal: Temperature humidity combined sensor; External: Two-channel temperature sensor
LED indicator	Status indicator, Power indicator
Display	Segment display
Communication interface	GPRS(2G version)/4G(4G version)/WiFi(WiFi version)
Alarm mode	Buzzer, SMS from Cloud, mobile App
Buttons	Power ON/OFF button, Menu button

Elitech[®]

Elite of technology

Elitech Technology, Inc.

1551 McCarthy Blvd Suite 112 Milpitas CA 95035

Sales Support: sales@e-elitech.com

Tech Support: info@e-elitech.com

<http://www.elitechlog.com>